

8200 Push Button Switches 8(8)A 250Vac & 12(12)A 250Vac



- ▶ Miniature push button
- ▶ 8A Inductive current rating
- ▶ Ratings up to 12(12)A, 250V ac (H suffix)
- ▶ Without button
- ▶ Sub panel mount
- ▶ Push on, solder or PCB terminals
- ▶ Latching and momentary



16(4)A 250Vac T85, 1E4 (10,000 Operations)
 12(12)A 250Vac T105, 1E4 (10,000 Operations)
 8(8)A 250Vac T105, 5E4 (50,000 Operations)
 6(6)A 250Vac T125, 5E4 (50,000 Operations)



12A 250Vac
 250Vac 1hp, 125Vac 1/2hp
 UL 85°C, file E45221, CSA file LR10990



RoHS compliant

3mm contact gap.
 Technical data on pages 4 & 5.

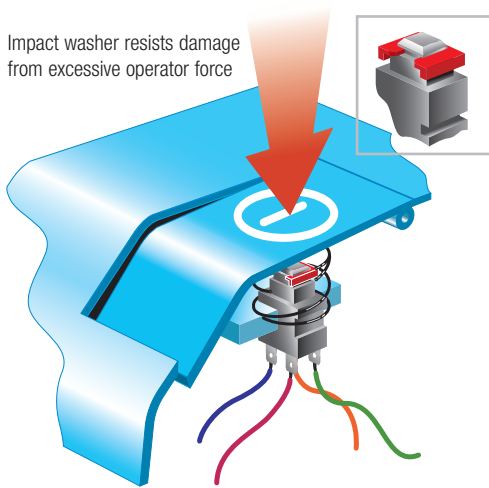
H 8200 A A H --

TERMINAL FUNCTION ACTUATOR BODY HIGHER RATING PRINT, COLOUR, ETC

push switches

TERMINAL	FUNCTION	ACTUATOR
<p>C</p> <p>6.3 x 0.8</p>		<p>A Standard actuator for snap-on custom adaptors</p>
<p>H</p> <p>4.8 x 0.8</p> <p>A</p> <p>As H, 4.8 x 0.8 Right angle</p>	<p>8200 ON - OFF Single pole</p>	<p>B Flat top actuator</p>
<p>K</p> <p>2.8 x 0.8</p>	<p>8201 ON - OFF (momentary ON) Single pole</p>	<p>C Curved top actuator</p>
<p>T</p> <p>Solder</p>	<p>8250 ON - OFF Double pole</p>	<p>Examples of possible actuation methods</p> <p>Using a Snap on adaptor</p>
<p>X</p> <p>PCB 0.8 Sq</p> <p>V</p> <p>Dual pin PCB 0.8 Sq (Call sales for matrix dims)</p>	<p>8251 ON - OFF (momentary ON) Double pole</p>	<p>Using a Hinged Actuator</p>
<p>M</p> <p>As V, PCB but Right angle</p>		

Alternative Actuator



C8250AA ---
with impact washer M1226



X8201AA ---



K8200AA ---



A8200AA ---



M8200AC ---



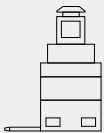
Example of M8200AC

push
switches

BODY

A

Standard body



See dimensioned drawings for details

C

As standard body but with side support peg for use with M PCB terminals

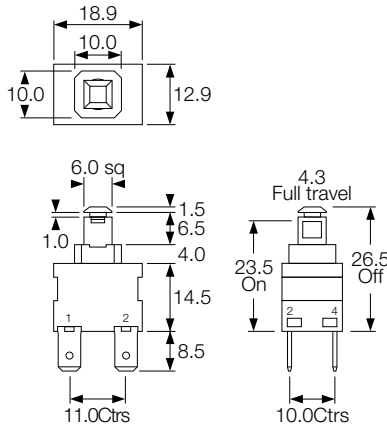


See dimensioned drawings for details

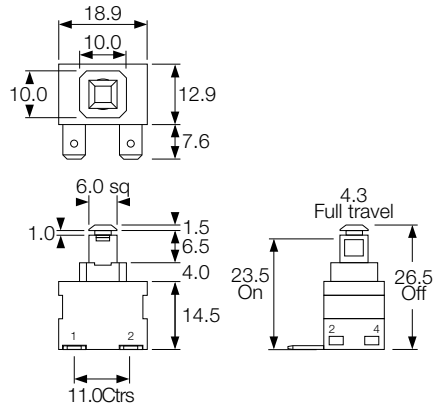
X and V PCB terminals.
Additional dummy terminals may be supplied for extra support.

DIMENSIONS (mm)

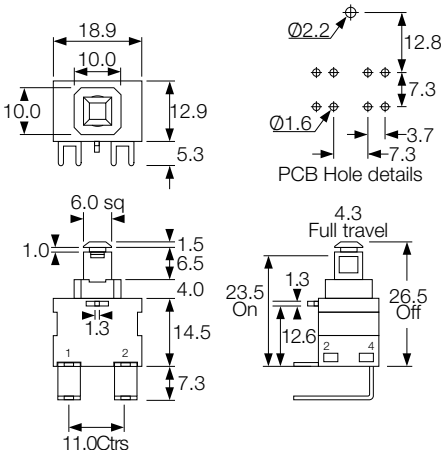
'A' body with 'H' 4.8 terminals



'A' body with 'A' right angle 4.8 terminals



'C' body with 'M' right angle PCB terminals



Example of possible mounting styles

