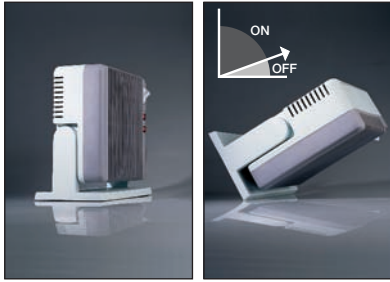


# Safety Cut-out Switches 16A 250Vac



Safety requirements for Portable Heaters can be met by the fitting of a safety cut-out switch. The heater will then turn off if overturned.



- ▶ Safety cut-out switches
- ▶ Ratings up to 16A, 250V ac
- ▶ Snap action switches
- ▶ NC contacts
- ▶ Pendulum or lever tilt operation

**C0320AA**  
15A 125/250Vac 1E4

15A 125/250Vac UL file no. E91274  
15A 1/2HP, 125/250Vac CSA file no. LR85259-2

**C0320BB**  
16A 125/250Vac T85 50E3

16A 250Vac 3/4hp T85 125Vac 1/2hp UL file no. E45221

**RoHS** RoHS compliant

μ contact gap.

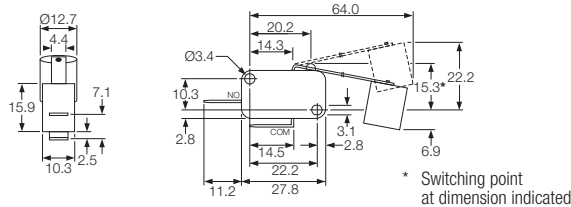
## C0320AA - - -

TERMINAL FUNCTION ACTUATOR MOUNTING

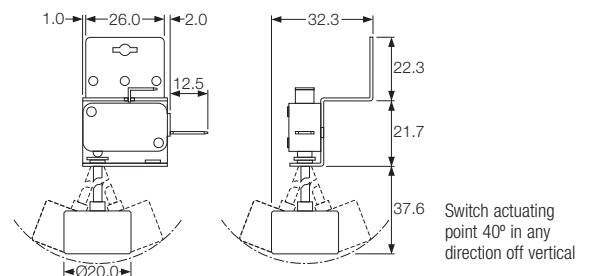
ORDER CODE	TERMINAL	FUNCTION	ACTUATOR	MOUNTING
<b>C0320AA</b>				
<b>C0320BB</b>				

### Dimensions (mm)

#### C0320AA



#### C0320BB



snap action switches