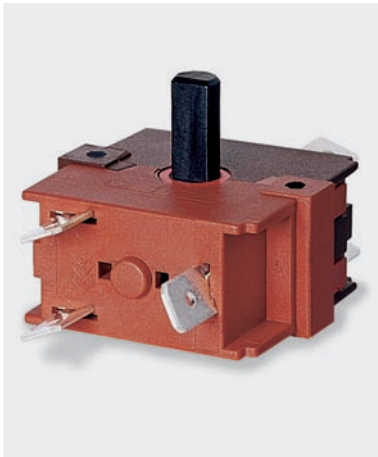


9100 Rotary Switches 16A 250Vac



- ▶ 2 to 6 position rotary switch
- ▶ Ratings up to 20A, 277 Vac Non Inductive
- ▶ Pairs of single pole change over contacts
- ▶ Wide choice of switching circuits
- ▶ Can be stacked together



16(4)A 250Vac T125
16A 400Vac T125



8(8)A 250Vac T125 5E4 (50,000 Operations)

UL CSA 20A Non Ind 277Vac, 250Vac 2hp, 125Vac 1hp
UL 85°C, file no. E45221, CSA file no. LR10990

In house test

30A 12V dc



RoHS compliant

9100 switches are highly versatile with up to 6 positions at 30° intervals and 6 terminals per switch. For more complex switching (7 positions & over), contact sales. Two switches may be stacked to give up to 12 terminal switching.

3mm contact gap.

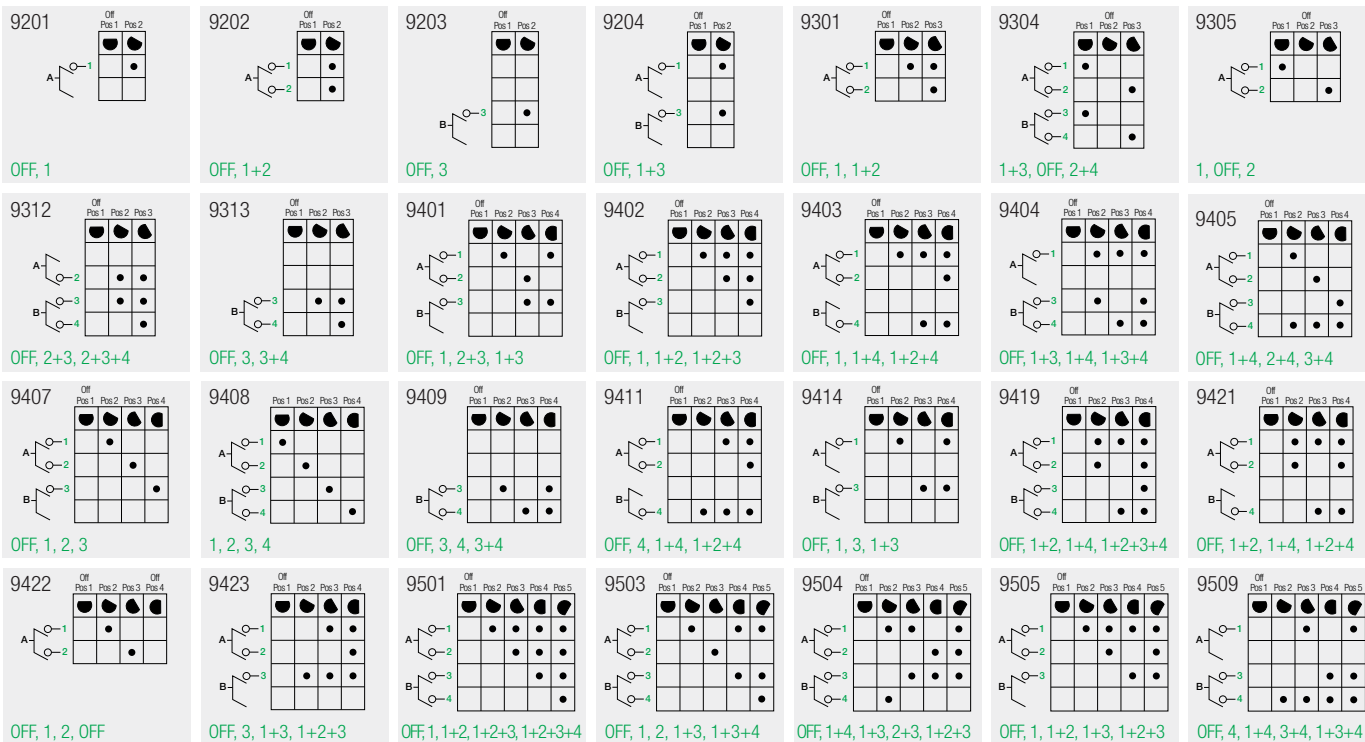
Technical data on pages 4 & 5.

C 9 5 01 D A

TERMINAL SERIES POSITIONS CIRCUIT SPINDLE BODY

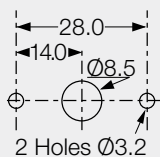
▶ TERMINAL	▶ SERIES	▶ POSITION	▶ CIRCUIT	▶ SPINDLE																					
<p>C</p> <p>6.3 x 0.8</p>	9	<p>2 Switching positions</p>	<p>9100 switches offer almost infinite switching options</p> <p>For this reason it is impractical to show all the options available.</p> <p>The table below gives an example of a 5 position switching sequence: OFF, 1, 1+2, 1+2+3, 1+2+3+4</p> <table border="1"> <thead> <tr> <th></th> <th>Off</th> <th>Pos 1</th> <th>Pos 2</th> <th>Pos 3</th> <th>Pos 4</th> <th>Pos 5</th> </tr> </thead> <tbody> <tr> <td>A</td> <td>●</td> <td>●</td> <td>●</td> <td>●</td> <td>●</td> <td>●</td> </tr> <tr> <td>B</td> <td></td> <td></td> <td>●</td> <td>●</td> <td>●</td> <td>●</td> </tr> </tbody> </table>		Off	Pos 1	Pos 2	Pos 3	Pos 4	Pos 5	A	●	●	●	●	●	●	B			●	●	●	●	<p>A B C N K</p> <p>A - Dim. X = 26.0 B - Dim. X = 22.0 C - Dim. X = 10.8 N - Dim. X = 20.0 K - Dim. X = 13.0</p>
		Off		Pos 1	Pos 2	Pos 3	Pos 4	Pos 5																	
A		●		●	●	●	●	●																	
B					●	●	●	●																	
		<p>3 Switching positions</p>																							
		<p>4 Switching positions</p>																							
	<p>5 Switching positions</p>																								
	<p>6 Switching positions</p>																								
<p>H</p> <p>4.8 x 0.8</p> <p>For approval information on H terminals, contact sales.</p> <p>Simple circuits may not use all terminals. Unnecessary terminals may be omitted.</p>		<p>D T</p> <p>D - Dim. X = 12.2 T - Dim. X = 18.0</p>																							
			<p>M</p>																						
			<p>P</p>																						
			<p>R</p> <p>for 2 gang switching</p>																						
			<p>S</p>																						
			<p>L supplied without spindle</p>																						

rotary switches



▶ BODY

A
Standard 2 hole mounting



Recommended Mounting
2 each of No4 / 3.0mm self tapping screws
5.0mm min penetration into switch body.

Stacked Switches
For more complex switching a second switch may be stacked on the first.



▶ OPTIONS

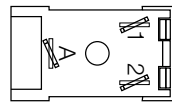
Anti-rotation stops
May be fitted at any of the index positions to limit the maximum angle of rotation.

Panel clearance
A spacer can be fitted to the switch body to increase the clearance between the mounting panel and switch terminals.

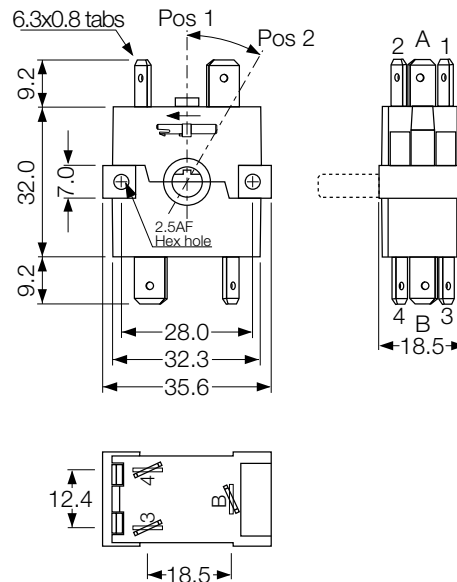
Custom spindles
Custom spindles of any length, with or without a "D" flat, can be produced from our infinitely variable tooling. The flat can be at any angle.

For all options call sales.

DIMENSIONS (mm)



Spindle Movement 360° in 30° intervals



Note
In the circuits on this page, the symbol ● shows the position of the switch cam, NOT the position of the spindle flat.